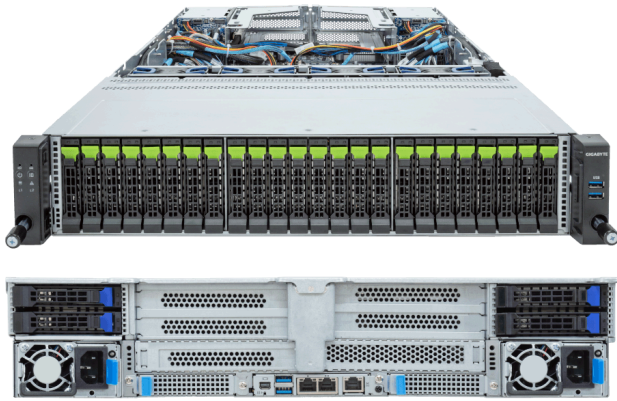
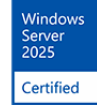


R283-Z96-AAJ1 (Rev. 1.x)

Rack Server - AMD EPYC™ 9004 Server Processors - 2U DP 24+4-Bay Gen5 NVMe/SATA/SAS-4 Titanium



Key Features

- Dual AMD EPYC™ 9004 Server Processors
- 12-Channel DDR5 RDIMM per CPU with 24 x DIMMs
- 2 x 1 Gb/s LAN ports via Intel® I350-AM2
- 24 x 2.5" Gen5 NVMe hot-swap bays
- 4 x 2.5" SATA/SAS-4 hot-swap bays on the rear side
- 2 x M.2 slots with PCIe Gen3 x4 and x2
- 1 x FHHL PCIe x16 slot with Gen5 x16 lanes
- 1 x OCP NIC 3.0 PCIe Gen5 x16 slot
- Compatible with SupremeRAID™ by Graid Technology
- 1+1 2000 W 80 PLUS Titanium redundant power supplies

Applications

Networks Server, Servers for Hybrid/Private Cloud...

Specification

| | | | |
|-------------------------|--|------------------------------|---|
| Dimensions | 2U (W438 x H87.5 x D815 mm) | PCIe Expansion Slots | 1 x FHHL x16 (Gen5 x16) 1 x OCP NIC 3.0 (Gen5 x16), Support NCSI |
| Motherboard | MZ93-FS1 | I/O Ports | Front: 2 x USB 3.2 Gen1 Rear: 2 x USB 3.2 Gen1, 1 x Mini-DP, 2 x RJ45, 1 x MLAN |
| CPU | AMD EPYC™ 9005 Server Processors AMD EPYC™ 9004 Server Processors Dual processors, cTDP up to 300 W - EPYC 9654 cTDP up to 400 W | Backplane Board | Front - CBP2081: PCIe Gen5 x4 Front - CBP20G0: PCIe Gen5 x4 Rear - CBP2025: SATA 6 Gb/s or SAS-4 24 Gb/s |
| OS Compatibility | OS Support List | TPM | 1 x TPM header (SPI), Optional TPM 2.0 kit: CTM010 |
| Socket | 2 x LGA 6096 (Socket SP5) | Power Supply | 1+1 2000 W 80 PLUS Titanium redundant power supplies AC Input: 100-240 V |
| Chipset | System on Chip | System Management | ASPEED® AST2600 Baseboard Management Controller GIGABYTE Management Console web interface |
| Memory | 12-Channel DDR5 RDIMM, 24 x DIMMs Up to 4800 MT/s | System Fans | 4 x 80x80x38mm |
| LAN | 2 x 1 Gb/s LAN (1 x Intel® I350-AM2), Support NCSI 1 x 10/100/1000 Mb/s Management LAN | Operating Properties | Operating: 10°C to 35°C, 8% to 80% (non-condensing) Non-operating: -40°C to 60°C, 20% to 95% (non-condensing) |
| Video | Integrated in ASPEED® AST2600 - 1 x Mini-DP | Packaging Content | 1 x R283-Z96-AAJ1 2 x CPU heatsinks 1 x Mini-DP to D-Sub cable 1 x 2-Section Rail kit |
| Storage | Front hot-swap: 24 x 2.5" Gen5 NVMe Rear hot-swap: 4 x 2.5" SATA/SAS-4 [1] Internal M.2: 1 x M.2 (2280/22110), PCIe Gen3 x4 1 x M.2 (2280/22110), PCIe Gen3 x2 [1] SAS card is required to support SAS drives. | Ordering Part Numbers | 6NR283Z96DR000ABJ1* |
| RAID | Require RAID add-in cards Optional compatible RAID Cards: NVMe/NVMe-oF RAID Cards with SupremeRAID™ by Graid Technology RAID Card models: SR-1000-FD32, SR-1010-FD32 Support RAID 0/1/5/6/10 | Optional Parts | - RAID card (SR-1000-FD32): 25FC1-SRBUN0-AFS - RAID card (SR-1010-FD32): 25FC1-SRBUN4-AFR - 3-Section Rail kit (Supports CMA): 25HB2-A56121-K0R - Cable Management Arm: 25HB1-R18300-K0R |



Learn more at: <https://www.gigabyte.com/Enterprise>

* All specifications are subject to change without notice. Please visit our website for the latest information.

* All trademarks and logos are the properties of their respective holders.

© 2026 Giga Computing Technology Co., Ltd. All rights reserved.

Last updated: Jun 24, 2026

Designed by

